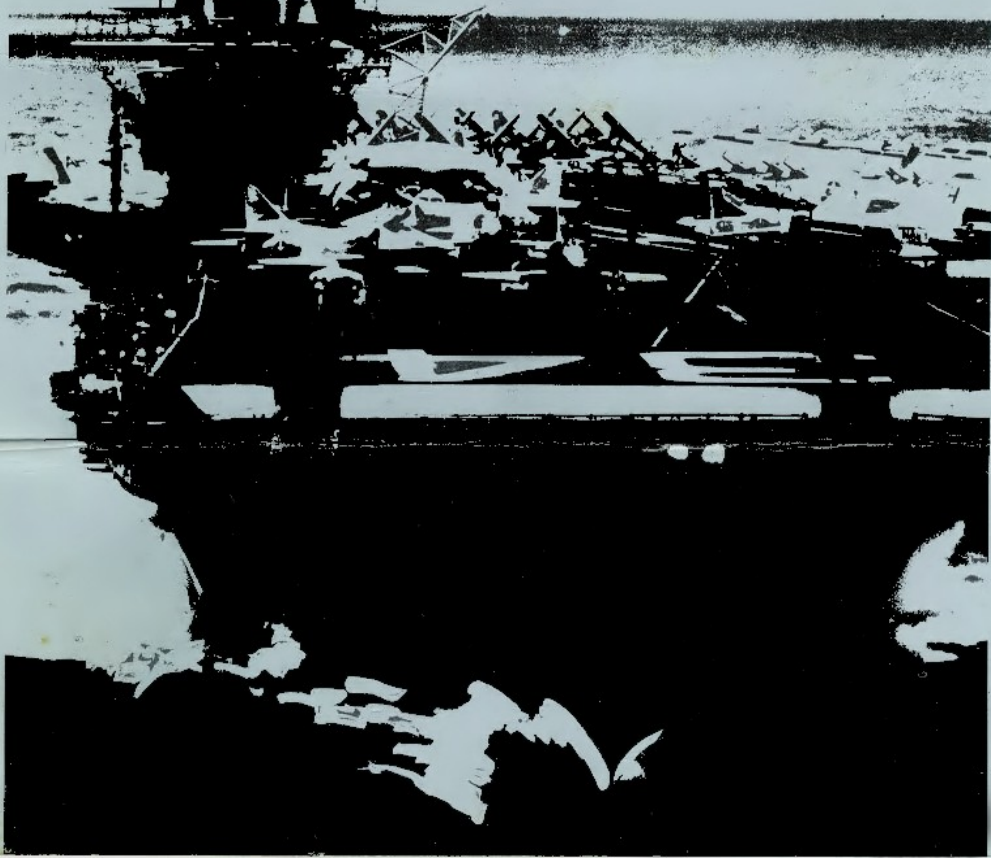


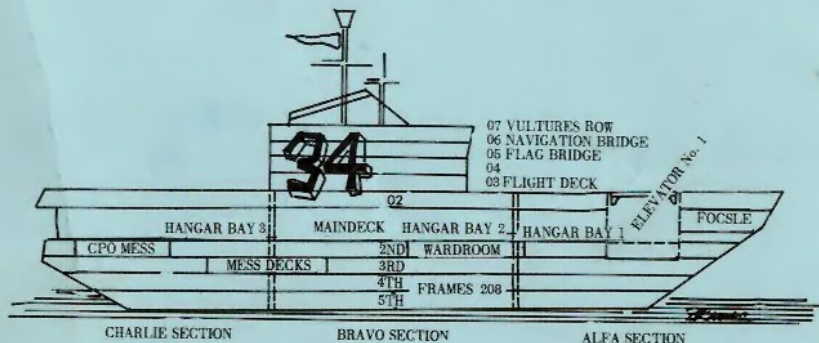
Welcome Aboard

USS ORISKANY
CVA 34



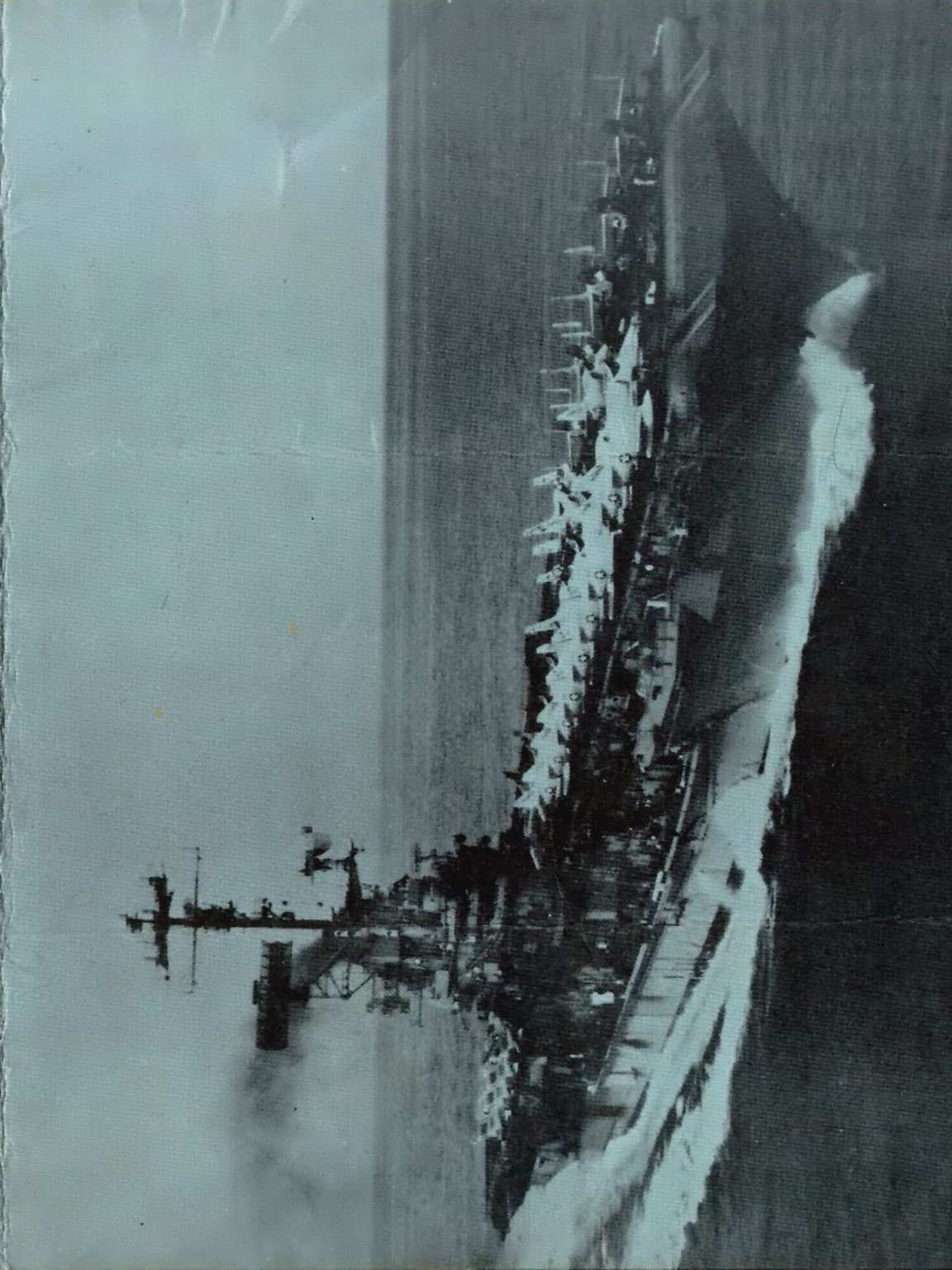
LIKE ALL NAVY SHIPS, ORISKANY IS COMPARTMENTALIZED IN ACCORDANCE WITH A DEFINITE SYSTEM OF NUMBERING AND CODING. THE SECRET OF FINDING YOUR WAY AROUND THE SHIP IS TO LEARN THE SIMPLE CODE AND NUMBER SYSTEM.

The ship is divided into three sections - ALFA (forward), BRAVO (amidships), and CHARLIE (aft). ALFA includes the area from frames 1-79, BRAVO--frames 79-150, and CHARLIE--frames 150-208. These letters will be the first symbol in any compartment designation. The next part of the designation will be numbers indicating the deck and location (odd numbers to starboard and even to port). As an example, let's take two typical (fictitious) compartment numbers -- A-304-L and B-0237-E. The "A" tells us that the space is in the ALFA (forward) section of the ship. The first digit, "3", tells us that it is on the third deck. The rest of the number, "04", tells us that it's on the port side (even) and is forward of any higher numbers, aft of lower numbers. The "L" indicates the type of space, in this case "living". The second compartment locates itself as follows: "B"--BRAVO section (amidships); "02"--02 level (two decks above the hangar deck); "37"--position in compartment sequence and on starboard side (odd number); "E"--it's a machinery space. The diagram below will help you by providing the overall layout of the ship.

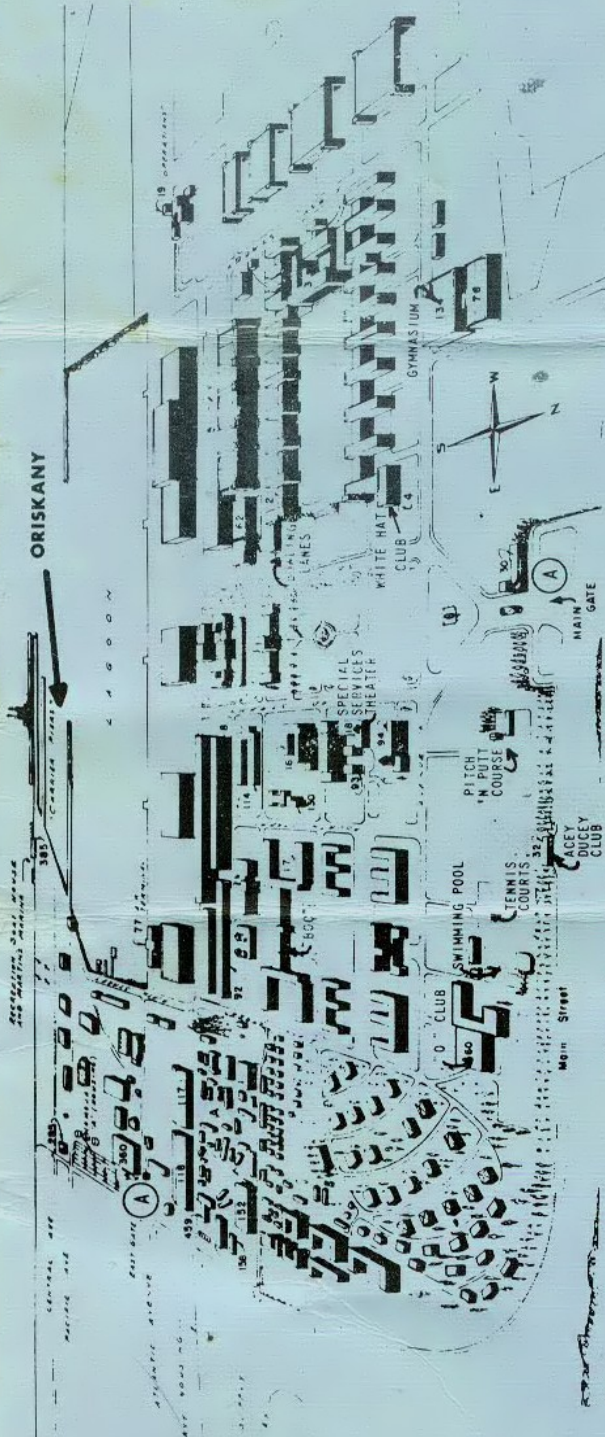


Oriskany is 911 feet long and displaces 45,000 tons. Her four steam turbine engines, fed by eight boilers, deliver 150,000 horsepower to four screws. Oriskany is capable of speeds in excess of 30 knots with a daily fuel consumption of 90,000 gallons when cruising at full speed. The ship's engineering plant operates diesel generators which can produce 7,000 kilowatts, enough electricity to serve the needs of a small city. This floating city's utilities also include: 1,000 telephones, enough electrical cable to reach from New York to Los Angeles, and a 200,000 gallons-per-day distilling plant to convert sea water to fresh water.

The crew totals 2,100 ship's company enlisted men and 115 officers. The embarked Air Wing numbers 1,000 enlisted men and 140 officers. These 3,350 Navymen and Marines daily consume 2,000 pounds of meat, 2,600 eggs, 600 pounds of potatoes, 83 pounds of lettuce and 420 pounds of bread. These 10,050 daily meals are topped off by 50 pounds of cake or 300 pies per meal and washed down with 400 gallons of fruit or vegetable juice.



ORISKANY



- Activity
- Acety-Ducey Club (Club 56)
- Administration
- Air Terminal
- BOQ
- Bank
- Barber Shop (enlisted)
- Barber Shop (officers)
- Bowling Alley
- Cafeteria (civilian)
- Cafeteria (Navy Exchange)
- Chaplain
- Cobbler Shop
- Commissary Store
- Commissioned Officers' Club
- Commissioned Officers' Mess
- CPO Club
- Dental

- Building
- 2
- 1
- 2
- 92
- 17
- 17
- 62
- 2
- 17
- 2
- 62
- 2
- 93
- 2
- 152
- 60
- 17
- 285
- 16

- Education and Information
- Enlisted Personnel Office
- Express and Freight
- General Mess Hall
- Hobby Shop
- Housing
- Industrial Relations Department
- Insurance and Bonds Office
- Laundry and Drycleaning
- Laundry and Drycleaning (officers)
- Library
- Medical
- NARTU
- Navy Exchange garage, service station, and nursery
- Navy Relief
- Operations Department
- Overhaul and Repair Department

- 118
- 18
- 114
- 385
- 93
- 30
- 2
- 18
- 94
- 18
- 8
- 4

- Navy Exchange Retail Store
- Post Office
- Public Works Department
- Recreation Boat House
- Red Cross
- Security
- Small Stores
- Special Services
- Station Chapel
- Station Theater
- Supply Department
- White Hat Club

A-C TRANSIT BUS STOPS

ORISKANY'S HOMEPORT - NAS, ALAMEDA